



CORRECTIONAL MENTAL HEALTH CARE CONFERENCE



JULY 18-20, 2026 • AUSTIN MARRIOTT DOWNTOWN

TABLETOP EXHIBITOR PROSPECTUS

EXHIBIT AT NCCHC'S CORRECTIONAL MENTAL HEALTH CARE CONFERENCE and connect with mental health professionals from across the country. As an exhibitor, you will gain visibility and exposure to the largest annual gathering of correctional mental health care providers who come together to share insights, find solutions, and identify best practices. Connect with more decision makers than you can in months of sales calls. Sign up for a cost-effective, easy set-up tabletop exhibit today!

Categories Attendees Specify, Recommend, or Buy:

- Correctional Mental Health Care Provider
- Educational Materials/Training Resources
- EHR/Health Record Technologies
- Mental Health Care Recruitment and Staffing Services
- Mental Health Care Services
- Opioid Treatment Services
- Patient Well-Being Services/Devices
- Pharmaceuticals
- Pharmacy Services
- Screening and Assessment Services
- Substance Abuse Treatment
- Suicide Prevention

Join Us in Wonderfully Weird Austin

Austin hums with live music, bold flavors, and a vibe all its own. Equal parts creative playground and tech hub, it's sure to attract a crowd.

Exhibit Hours (subject to change)

SUNDAY, JULY 19, 9 am – 3 pm

Set-up must be complete by 8:30 am.

9:45 am – 10:15 am Refreshment break

2:30 pm – 3 pm Refreshment break

MONDAY, JULY 20, 9:30 am – 1:30 pm

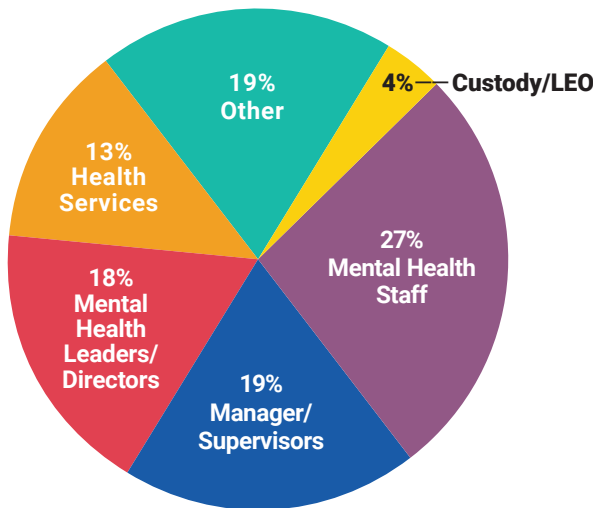
9:45 am – 10:15 am Refreshment break

1 pm – 1:30 pm Refreshment break

Breakdown must be completed by 5 pm.

Please staff your tabletop during the refreshment breaks. During conference hours, exhibitors are welcome to staff their tabletop or attend sessions.

Who Attended In 2025?



“Thank you to the entire NCCHC team for going above and beyond to ensure we had everything we needed to succeed.”

– Past Exhibitor



Become an exhibitor today!

Email sales@ncchc.org or call 773-880-1460 for more information

Are you interested in doing business with facilities like these?

Showcase your products and services, cement current relationships and make new ones! Representatives from these facilities and providers attended the 2025 Correctional Mental Health Care Conference.

AB Staffing Solutions • Acadia Healthcare • Advocates • Allegheny County Department of Human Services • Allegheny County Jail • Alliant International • Ameelio • Arizona Department of Corrections • Arizona Department of Juvenile Corrections • Armor Health • Astyra Global, Inc. • Auburn University • Augusta University, Department of Juvenile Justice Health Services (AU DJJHS) • Barnstable County Sheriff's Office • BayMark Health Services, Inc. • Be the Light Clinical Supervision and Consulting • Benchmark Human Services • Bexar County • Boulder County Sheriff's Office • Braeburn, Inc. • Broward County Sheriff's Office • Caddo Parish Sheriff's Office • California Correctional Health Care Services • California Department of Corrections and Rehabilitation • California Men's Colony (CMC) • Capital District Juvenile Secure Detention Facility • Care From the Hart • Centurion Health • Cermak Health Services of Cook County -Cook County Dept. of Corrections • CFG Health Systems, LLC • Christiana Care • Cochise County Jail • Colorado Christian University • Colusa County • Connecticut Department of Correction • CoreCivic • Correctional Healthcare Partners • County of Marin Department of Health and Human Services • County of Santa Clara Custody Health Services • County of Santa Clara Health System • Crossroads Correctional Center • David L. Moss Criminal Justice Center • DC Department of Youth July 18-20, 2026 • Austin Marriot Downtown Rehabilitation Services • DeKalb County Jail • Delaware Department of Correction • Douglas County Department of Corrections • DRCK CONSULTING • Eddy County Detention Center • Essex County Sheriff's Department Correctional Facility • Falcon Correctional & Community Services Inc. • Federal Bureau of Prisons • Franklin County Common Pleas Court - General Division • Freedom Behavioral Health, Inc. • George W. Hill Correctional Facility • Gordon Rees Scully Mansukhani • Grays Harbor County Jail • Harris Health System • Hawaii Youth Correctional Facility • Health Care Partners Foundation • Horizon Health • Humane Prison Hospice Project • Idaho Department of Correction • Idaho Maximum Security Institution • Ideal Option • Integrated Wellness Solutions • Jail Suicide Expert Services • Jerome Combs Detention Center • Juneau County Sheriff's Office • Kansas University Medical Center • Kershaw County Detention Center • Kings County Jail • Klamath Basin Behavioral Health • Liberty Health Care • Liberty Healthcare Corporation • LifeStance • Los Angeles County Department of Health Services • Management & Training Corporation • Maricopa County Correctional Health Services • MEDIKO, Inc. • MHMR of Tarrant County • Minnesota Department of Corrections • Montana Department of Corrections • Montgomery County Department of Corrections and Rehabilitation • Multnomah County Corrections Health • NaphCare, Inc. • National University • Nebraska Department of Correctional Services • Norfolk County Sheriff's Office • North American Vipassana Prison Trust • North Carolina Department of Adult Correction • Okmulgee County Criminal Justice Authority • Ontario County Jail • Orange County Correctional Facility • Parkland Health & Hospital - Dallas • Passaic County Jail • Philadelphia Department of Prisons • Physician Correctional, USA • Plumas County Correctional Facility • Prince William - Manassas Regional Adult Detention Center • Prince William County Juvenile Detention Center • Professional Wound Specialists • Pueblo of Zuni Department of Corrections • Quality Correctional Health Care (QCHC) • Rockingham County Department of Corrections Facility • Rutgers Robert Wood Johnson Medical School • Sacramento County • Sacramento County Department of Health and Human Services • Sacramento County Probation Department Youth Detention Facility • Sam Houston State University - College of Health Sciences • San Bernardino County Sheriff's Department • San Diego County Sheriff's Department • San Joaquin County Behavioral Health Services • San Joaquin County John Zunino Jail Complex • San Joaquin County Sheriff's Office • San Luis Obispo County Jail • San Mateo County • San Quentin Rehabilitation Center (SQ) • Santa Clara County Custody Behavioral Health • Santa Clara County Main Jail • Santa Cruz County Sheriff's Office • Saudi General Directorate of Prison Health • Siskiyou County Jail • St. Louis County Department of Public Health • St. Luke Community Healthcare • Unity Health Care Inc • University of Southern California • University of Texas Medical Branch Correctional Managed Care • U.S. Probation District of Arizona • VitalCore Health Strategies, LLC • Washington County Jail • Washington State Department of Corrections • Washington State Department of Health • Washtenaw County Correctional Facility • Wayne County Juvenile Detention Facility • Weld County North Jail Complex • Wellpath • Wexford Health Sources, Inc. • Whitman College • Wisconsin Resource Center • Yale University • YesCare • Youth Community Justice Partners, P.C.

Benefits of Exhibiting

For \$1,900, exhibitors receive:

- Face-to-face conversations with stakeholders
- Two FREE full conference registrations, including up to 15 continuing education credits
- Skirted table and two chairs
- FREE company listing with 75-word description in the official printed Final Program and website
- Preconference and final attendee mailing lists with opt-in emails (in accordance with ACCME/ANCC compliance)
- Opportunity to become a sponsor or advertise in preconference and on-site materials

Also available: Full-page, 4-color ad in the conference Preliminary or Final Program. Only \$1,300 for exhibitors!

Exhibitors can also sponsor the Virtual Correctional Mental Health Care Conference, taking place in August 2026.

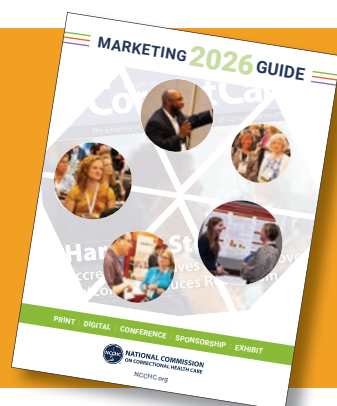
Share your services and solutions with mental health care professionals who log in from home. Sponsors receive banners on the virtual event site, which last year attracted more than 7,000 visitors, plus the registration list.

Expand your reach! Only \$800

To promote the Correctional Mental Health Care Conference, NCCHC conducts a comprehensive marketing campaign. Contact sales@ncchc.org to hear about opportunities available for sponsorships and advertising. Be part of this exciting event!



The NCCHC Marketing Guide outlines the many ways your company can gain industry exposure to these results-oriented professionals and provide them with the solutions they need.



Qualified Customers, New Leads

Join hundreds of mental health care professionals, all focused on corrections. Put your expertise and solutions in front of this motivated, dedicated group of attendees. They are seeking new ideas and resources to help their patients cope with mental health challenges behind bars and upon release back into the community. In this unique, collegial setting you'll find customers and leads who are seeking products and services to help them maximize their effectiveness. Sign up for a cost-effective tabletop exhibit today.